

# MANUAL CONTROL VALVES

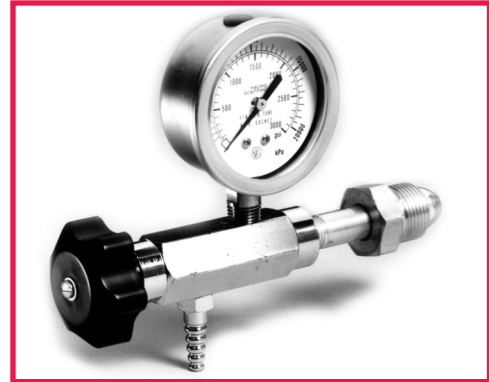
## Series 8500

### DESCRIPTION

Manual controls are designed for direct connection to a compressed gas cylinder valve outlet. They provide a simple means of transferring the contents of a cylinder to another system or vessel. They **DO NOT** control pressure and should never be used without an operator in attendance at all times.

Four models are presented here with the following basic design features:

- Maximum inlet pressure - 3000 psig.
- Teflon® packing for smooth leak-free operation.
- Finger-tip control of flow from only a few cc per minute to very rapid withdrawal.



### HOW TO ORDER

#### Series 8520 - 303 Stainless Steel

Model	Outlet Connection
8520H*	1/4" hose barb
8520T*	1/4" compression fitting
8520PF*	1/4" NPT female

\*Specify CGA connection number when ordering.

#### Series 8523 - 303 Stainless Steel with 0-3000 psig Cylinder Pressure Gauge

Model	Outlet Connection
8523H*	1/4" hose barb
8523T*	1/4" compression fitting
8523PF*	1/4" NPT female

\*Specify CGA connection number when ordering.

#### Series 8550 - Monel®

Model	Outlet Connection
8550H*	1/4" hose barb
8550T*	1/4" compression fitting
8550PF*	1/4" NPT female

\*Specify CGA connection number when ordering.

# EASY-MOUNT REGULATOR BRACKET

## Series EZ3000

This bracket allows either single stage or two stage regulators to be mounted or removed without removing the adjusting knob or resetting the delivery pressure provided the regulator is supplied by the factory with the panel mount nut installed. The bracket will accommodate any bar stock panel mountable regulator shown in this catalog.

### HOW TO ORDER

Model	Description
EZ3100	For single stage regulators
EZ3200	For two stage regulators

